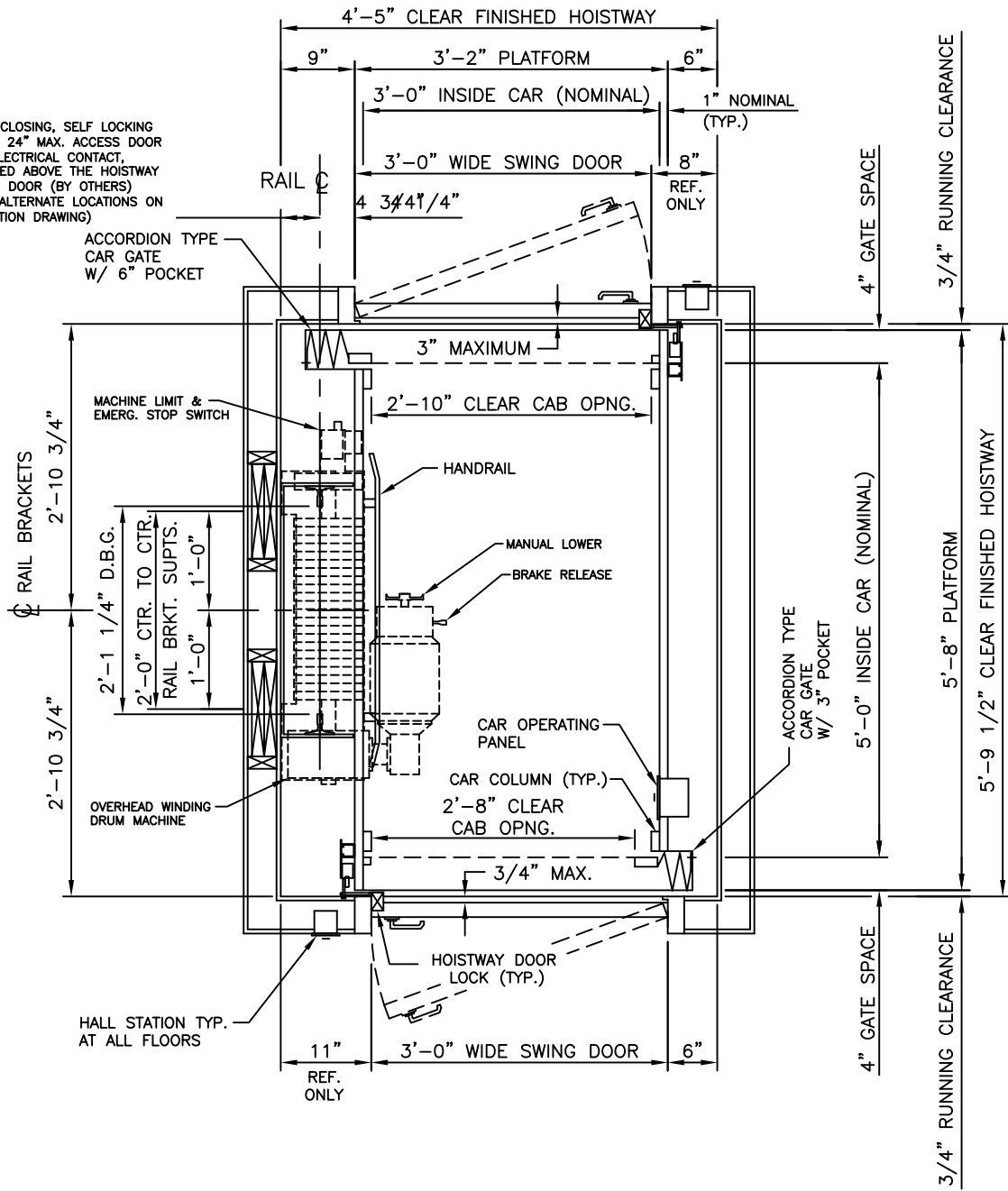


NOTE:  
 SELF CLOSING, SELF LOCKING  
 24" x 24" MAX. ACCESS DOOR  
 W/ ELECTRICAL CONTACT,  
 LOCATED ABOVE THE HOISTWAY  
 SWING DOOR (BY OTHERS)  
 (SEE ALTERNATE LOCATIONS ON  
 ELEVATION DRAWING)



## Hoistway Plan (RR-10-950WD)



Custom Elevator Mfg. Co., Inc.  
 5191 Stump Road  
 Plumsteadville, PA 18949  
 Toll Free: 888-443-2800  
 Fax: 215-766-3385

CABLE DRIVE  
 RESIDENTIAL ELEVATOR