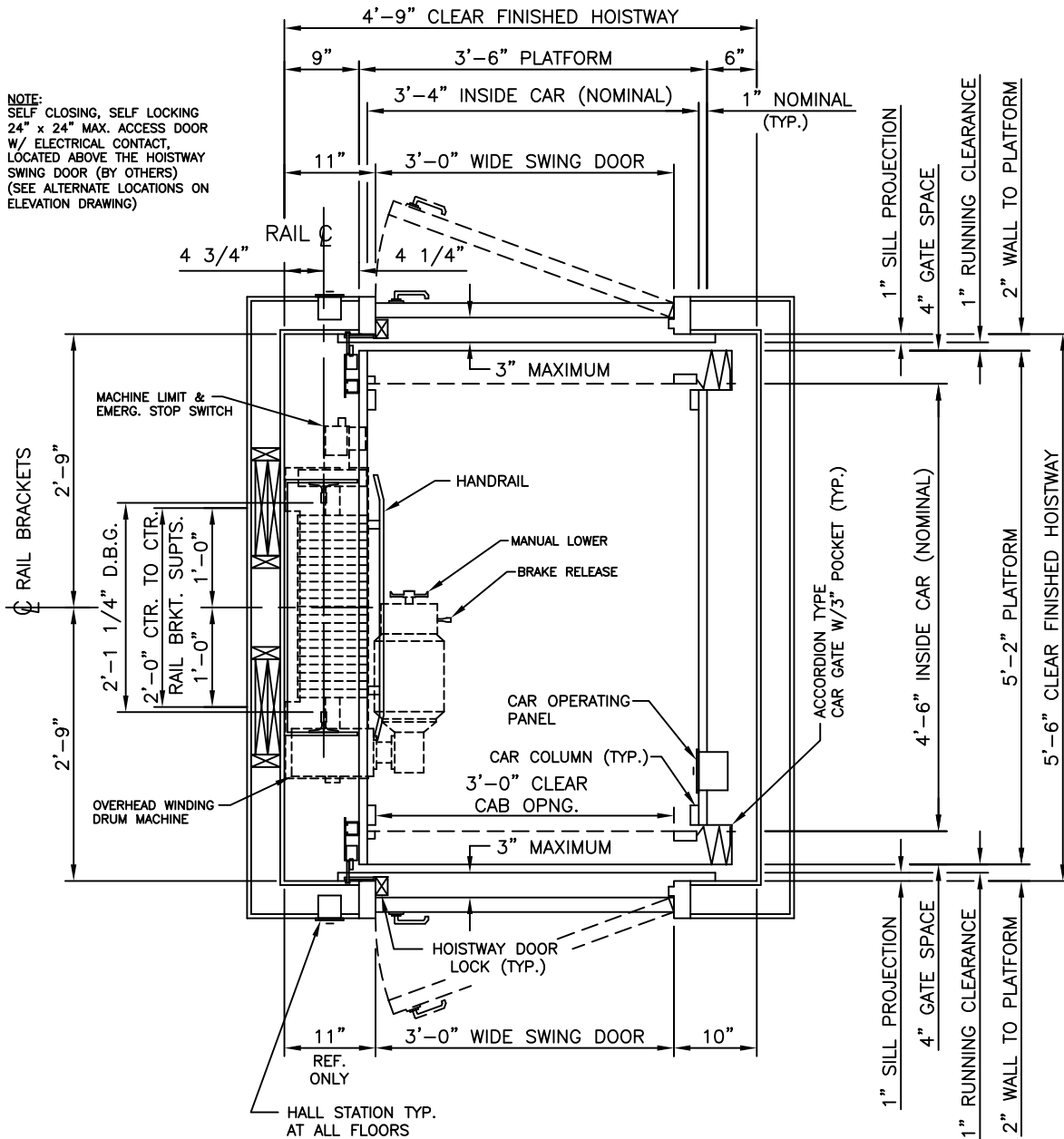


NOTE:
 SELF CLOSING, SELF LOCKING
 24" x 24" MAX. ACCESS DOOR
 W/ ELECTRICAL CONTACT,
 LOCATED ABOVE THE HOISTWAY
 SWING DOOR (BY OTHERS)
 (SEE ALTERNATE LOCATIONS ON
 ELEVATION DRAWING)



Hoistway Plan (RL-11-950WD-40x54)



Custom Elevator Mfg. Co., Inc.
 5191 Stump Road
 Plumsteadville, PA 18949
 Toll Free: 888-443-2800
 Fax: 215-766-3385

CABLE DRIVE
 RESIDENTIAL ELEVATOR